



A/T Gear Position Signal

Diagnostic Trouble Code (DTC) 6-1: A/T gear position signal

NOTE: When the back-up voltage is disconnected from the TCS control unit, the TCS control unit on an A/T model goes into the M/T mode. Once the engine is started, however, the TC SP signal switches the TCS control unit back to the A/T mode. The system mode can be confirmed by performing the "steering angle sensor system check".

Confirm the A/T system code (see section 14).

Is a code indicated? YES Repair according to the PCM system troubleshooting guide (see section 14).

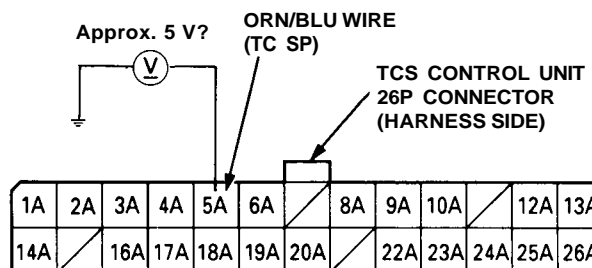
NO

Raise the car and support it with safety stands (see section 1).

Start the engine.

Shift the transmission into **P** **N** or **2**.

Measure the voltage between the TCS control unit 26P connector terminal 5A (+) and body ground.



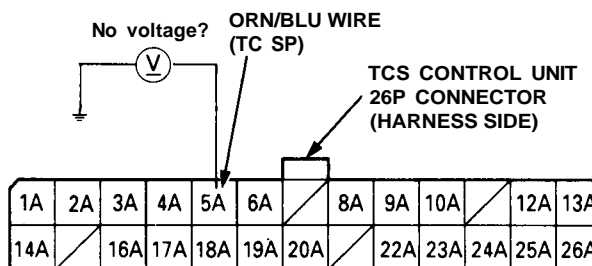
View from terminal side

Is there approx. 5 V? NO (To page 19-147)

YES

Shift the transmission into **1** or **R**.

Measure the voltage between the TCS control unit 26P connector terminal 5A (+) and body ground.



View from terminal side

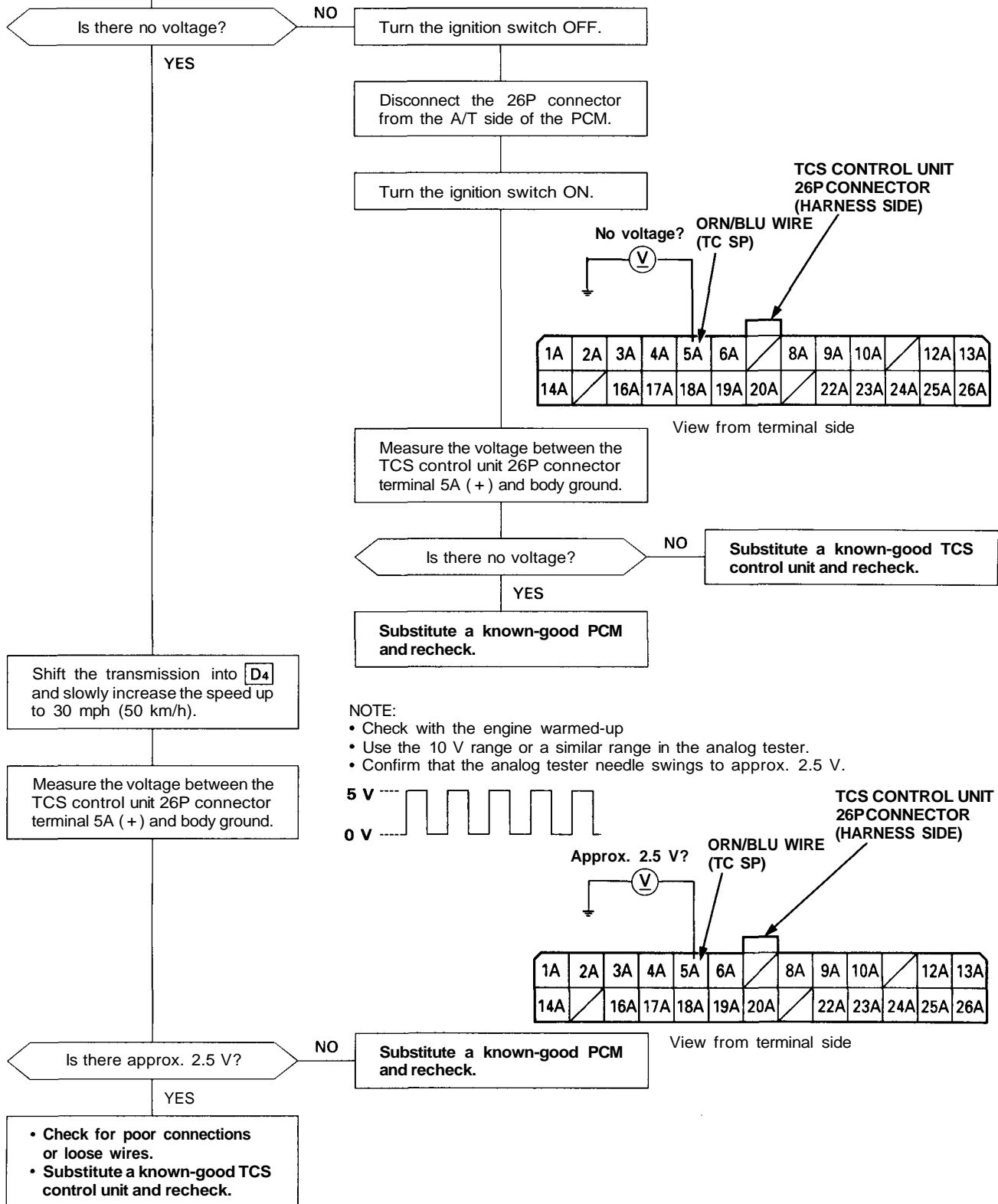
(To page 19-146)

(cont'd)

Troubleshooting

A/T Gear Position Signal (cont'd)

(From page 19-145)





(From page 19-145)

Turn the ignition switch OFF.

Connect the test harness with the **adaptor** to the A/T side of the PCM (see section 14).

Start the engine.

Shift the transmission into **P** **N**
or **2**.

Measure the voltage between the **test harness** No. A11 terminal (+) and body ground.

Is there approx. 5 V?

YES

Repair open in the ORN/BLU wire between the TCS control unit and PCM.

NO

Turn the ignition switch OFF.

Disconnect the 26P connector from A/T side of the PCM and the 26P connector from the TCS control unit.

Check for continuity between the TCS control unit 26P connector terminal 5A and body ground.

Is there continuity?

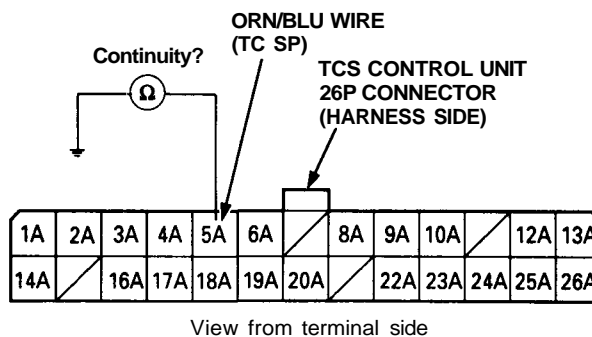
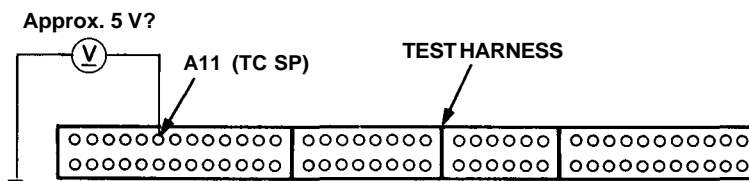
YES

Repair short in the ORN/BLU wire between the TCS control unit and PCM.

NO

(To page 19-148)

NOTE: Modify the test harness (07LAJ-PT3010A) connector by removing the bars from both ends of the A (26P) male connector block.



(cont'd)

Troubleshooting

A/T Gear Position Signal (cont'd)

(From page 19-147)

Reconnect the 26P connector to the TCS control unit.

Measure the resistance between the 26P connector terminals 5A and 20A or the 16P connector terminal 5B of the TCS control unit.

